

Hubbard Brook High Resolution Images (from JCampbell)



all 3 color_4 by 3 at 300.jpg
1200 x 819
1.2 MB



Amey editing.JPG
2048 x 1536
1.0 MB



DSC01328.JPG
1280 x 960
584.6 kB



DSC01329.JPG
1280 x 960
600.1 kB



DSC01330.JPG
1280 x 960
604.7 kB



DSC01331.JPG
1280 x 960
603.6 kB



DSC01332.JPG
1280 x 960
589.3 kB



DSC01333.JPG
1280 x 960
605.4 kB



DSC01334.JPG
1280 x 960
581.2 kB



DSC01335.JPG
1280 x 960
572.8 kB



DSC01336.JPG
1280 x 960
589.9 kB



DSC01337.JPG
1280 x 960
591.0 kB

Hubbard Brook High Resolution Images (from JCampbell)



DSC01338.JPG
1280 x 960
624.9 kB



DSC01339.JPG
1280 x 960
552.6 kB



DSC01340.JPG
1280 x 960
584.5 kB



DSC01341.JPG
1280 x 960
621.9 kB



DSC01342.JPG
1280 x 960
589.6 kB



DSC01343.JPG
1280 x 960
528.1 kB



DSC01344.JPG
1280 x 960
572.6 kB



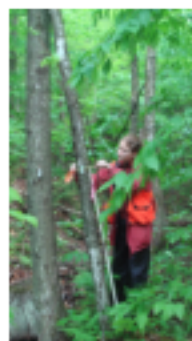
DSC01388.JPG
1280 x 960
598.5 kB



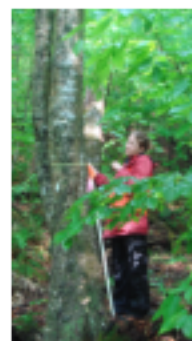
DSC01389.JPG
1280 x 960
611.6 kB



DSC01390.JPG
1280 x 960
628.2 kB



DSC02783.JPG
1615 x 2942
2.1 MB



DSC02792.JPG
1538 x 2748
1.8 MB

Hubbard Brook High Resolution Images (from JCampbell)



DSC02803.JPG
1945 × 3066
2.6 MB



forest shot.jpg
1947 × 1296
1.3 MB



HBk and Pemi 30 June
1973a.jpg
1599 × 1092
310.7 kB



HBk at Rte3 Jan-1963a.jpg
1599 × 1092
401.3 kB



HBk Frostbite Falls-jul-1956.jpg
1599 × 1092
124.8 kB



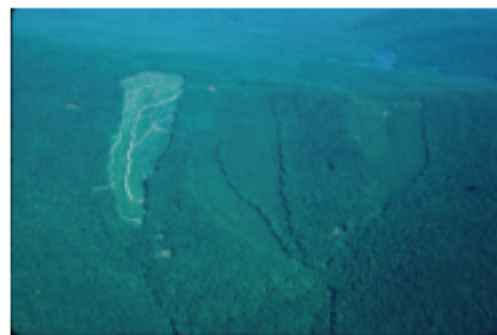
HB Valley precut.jpg
1505 × 973
370.0 kB



HB watershed and mirror lake
color adj.jlc.tif
1044 × 1563
4.9 MB



hbweb_takings_notes.tif
1619 × 1080
5.2 MB



hbweb_watersheds1.tif
1619 × 1080
5.2 MB



hbweb_watersheds2.tif
1619 × 1080
5.2 MB



hbweb_weir_4.tif
1619 × 1080
5.2 MB



hbweb_weir.tif
1619 × 1080
5.2 MB

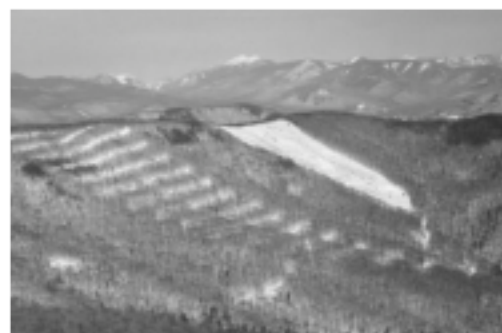
Hubbard Brook High Resolution Images (from JCampbell)



heli1.tif
3360 × 2255
22.8 MB



heli2.tif
2240 × 3230
21.7 MB



Hornbeck_W2_4 mtns.jpg
1797 × 1176
1.5 MB



Image4.tif
2411 × 3623
26.2 MB



Image5.tif
2411 × 3623
26.2 MB

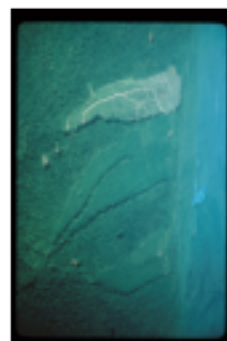


Image6.tif
2411 × 3623
26.2 MB



IMG_0051.JPG
1386 × 2272
1.6 MB



IMG_0055.JPG
1417 × 2255
1.4 MB



IMG_0064.JPG
2272 × 1704
2.5 MB



IMG_0066.JPG
2272 × 1704
2.9 MB



img009.tif
1199 × 1799
6.5 MB



img010.tif
1799 × 1199
6.5 MB

Hubbard Brook High Resolution Images (from JCampbell)



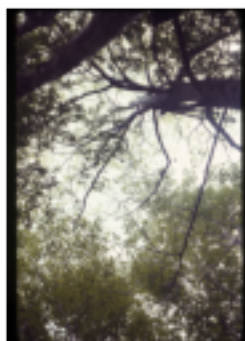
img011.tif
1814 × 1209
6.6 MB



img012.tif
1799 × 1199
6.5 MB



img013.tif
1814 × 1209
6.6 MB



img014.tif
3000 × 4200
37.8 MB



img015.tif
2400 × 3600
25.9 MB



img016.tif
3600 × 2400
25.9 MB



img017.tif
3600 × 2400
25.9 MB



img018.tif
3600 × 2400
25.9 MB



IMG_0863.JPG
4000 × 3000
3.0 MB



IMG_0864.JPG
3264 × 2448
1.4 MB



IMG_0869.JPG
4000 × 3000
4.1 MB



IMG_1766.JPG
3264 × 2448
3.2 MB

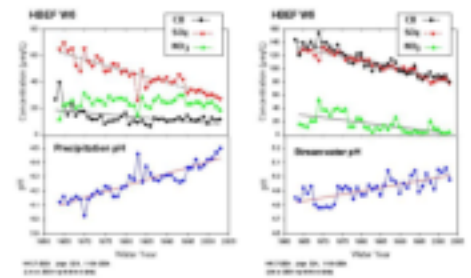
Hubbard Brook High Resolution Images (from JCampbell)



IMG_1770.JPG
3264 × 2448
3.3 MB



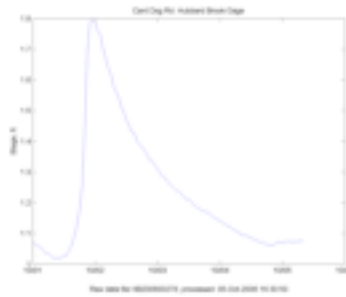
jan 1963.tif
1599 × 1092
5.2 MB



long-term chem.jpg
720 × 540
61.0 kB



Main Hubbard_300.jpg
1500 × 1125
1.5 MB



Main Hubbard new gaging station.png
1600 × 1200
17.2 kB



Mirror_Lake2.jpg
796 × 534
469.4 kB



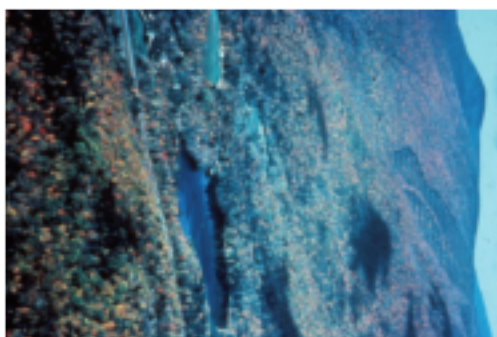
mirror_lake_fall.tif
1510 × 942
4.3 MB



Mirror Lake outlet 2.jpg
1600 × 1200
1.0 MB



Mirror Lake outlet 4.jpg
1600 × 1200
999.7 kB



mirrorlake.tif
1044 × 1563
4.9 MB



ML-iceout03.jpg
2057 × 1517
602.7 kB



MountainView.tif
2592 × 3872
30.1 MB

Hubbard Brook High Resolution Images (from JCampbell)



paradise_brook_falls.tif
1575 × 1048
5.0 MB



paradise_brook.tif
1568 × 975
4.6 MB



pellets.tif
3424 × 2287
23.5 MB



pin_block1.tif
1528 × 1043
4.8 MB



pin_block2.tif
1527 × 1048
4.8 MB



precip.tif
2460 × 3377
24.9 MB



raingage2.tif
1552 × 1080
5.0 MB



raingage.tif
1563 × 1076
5.0 MB



sample.tif
2280 × 3357
23.0 MB



snow_birches.tif
1552 × 1026
4.8 MB



snow_core.tif
1023 × 1555
4.8 MB

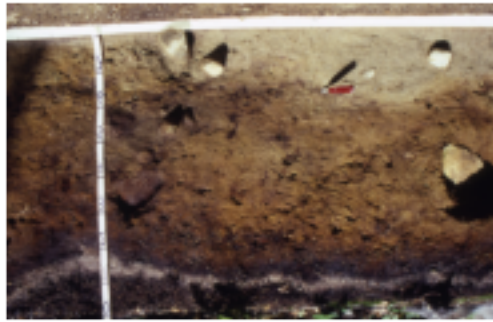


Soil_frost_pierce.tif
1560 × 1043
4.9 MB

Hubbard Brook High Resolution Images (from JCampbell)



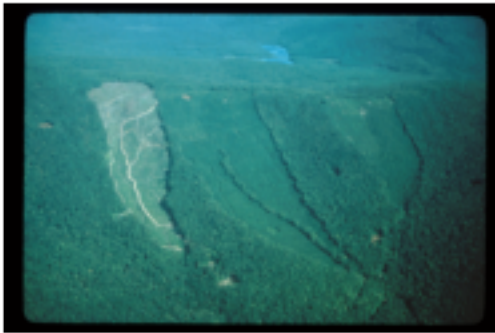
soil_profile2.tif
1020 × 1555
4.8 MB



soil_profile.tif
1527 × 976
4.5 MB



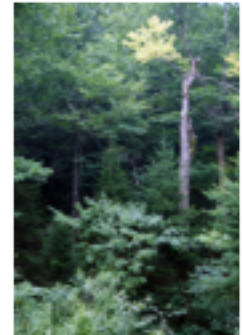
South_facing.jpg
810 × 538
480.6 kB



south_facing wsheds.tif
3623 × 2411
26.2 MB



temperature.tif
1571 × 1043
4.9 MB



TreesNearWeir9.tif
2592 × 3872
30.1 MB



Tree.tif
2592 × 3872
30.1 MB



valley1.tif
5540 × 3849
64.0 MB



valley precut.tif
6152 × 4640
85.7 MB



view from W9_fall.tif
1527 × 976
4.5 MB



W1_helicopter2.tif
3713 × 2529
28.2 MB

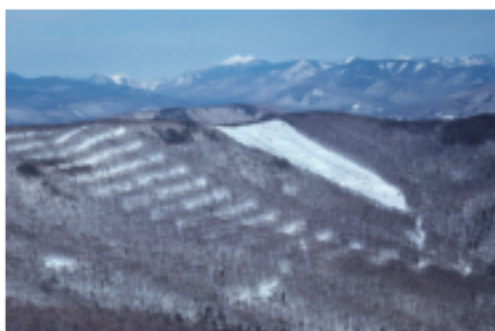


W1_helicopter3.tif
3713 × 2529
28.2 MB

Hubbard Brook High Resolution Images (from JCampbell)



W1_helicopter.tif
3713 × 2529
28.2 MB



W2_4 mtns.jpg
1797 × 1176
1.4 MB



W2 with mtns.tif
5384 × 4372
23.6 MB



w3_snowmelt.tif
1527 × 1036
4.8 MB



W5_feller_buncher1.tif
1476 × 981
4.4 MB



W5_feller_buncher2.tif
1032 × 1563
4.8 MB



Weir1.jpg
794 × 540
516.1 kB



weir2.tif
2300 × 3337
23.1 MB



weir_B&W.tif
2850 × 2266
6.5 MB



WS2_from_WS9.tif
3623 × 2411
26.2 MB



WS4.tif
764 × 1038
2.4 MB



WS5_a.tif
2272 × 3294
22.5 MB

Hubbard Brook High Resolution Images (from JCampbell)



WS5.tif
1296 × 1947
7.6 MB



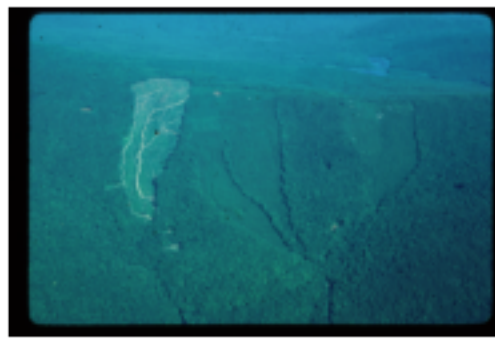
WS9_1996.tif
3601 × 2701
29.2 MB



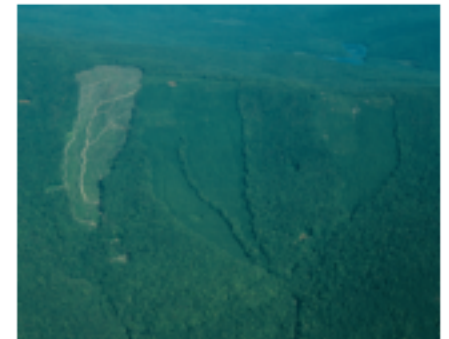
WS9_junk.tif
145 × 109
62.9 kB



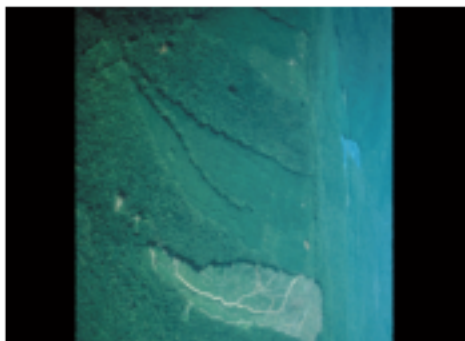
WS9.tif
1200 × 810
2.9 MB



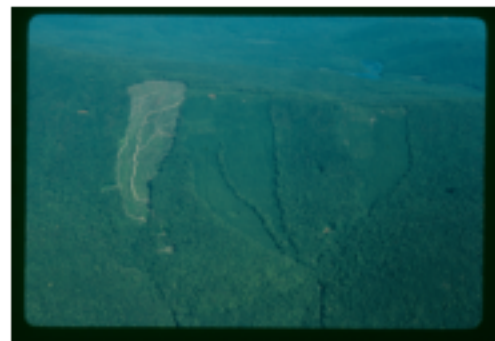
wshedaerial.tif
1947 × 1296
7.6 MB



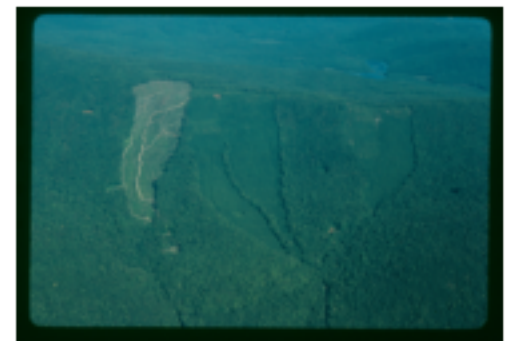
wsheds_1.tif
1500 × 1200
5.4 MB



wsheds54.tif
3421 × 2495
25.6 MB



wsheds_old.tif
3400 × 2358
24.1 MB



wsheds.tif
3400 × 2358
24.1 MB



WS.tif
798 × 1052
2.5 MB